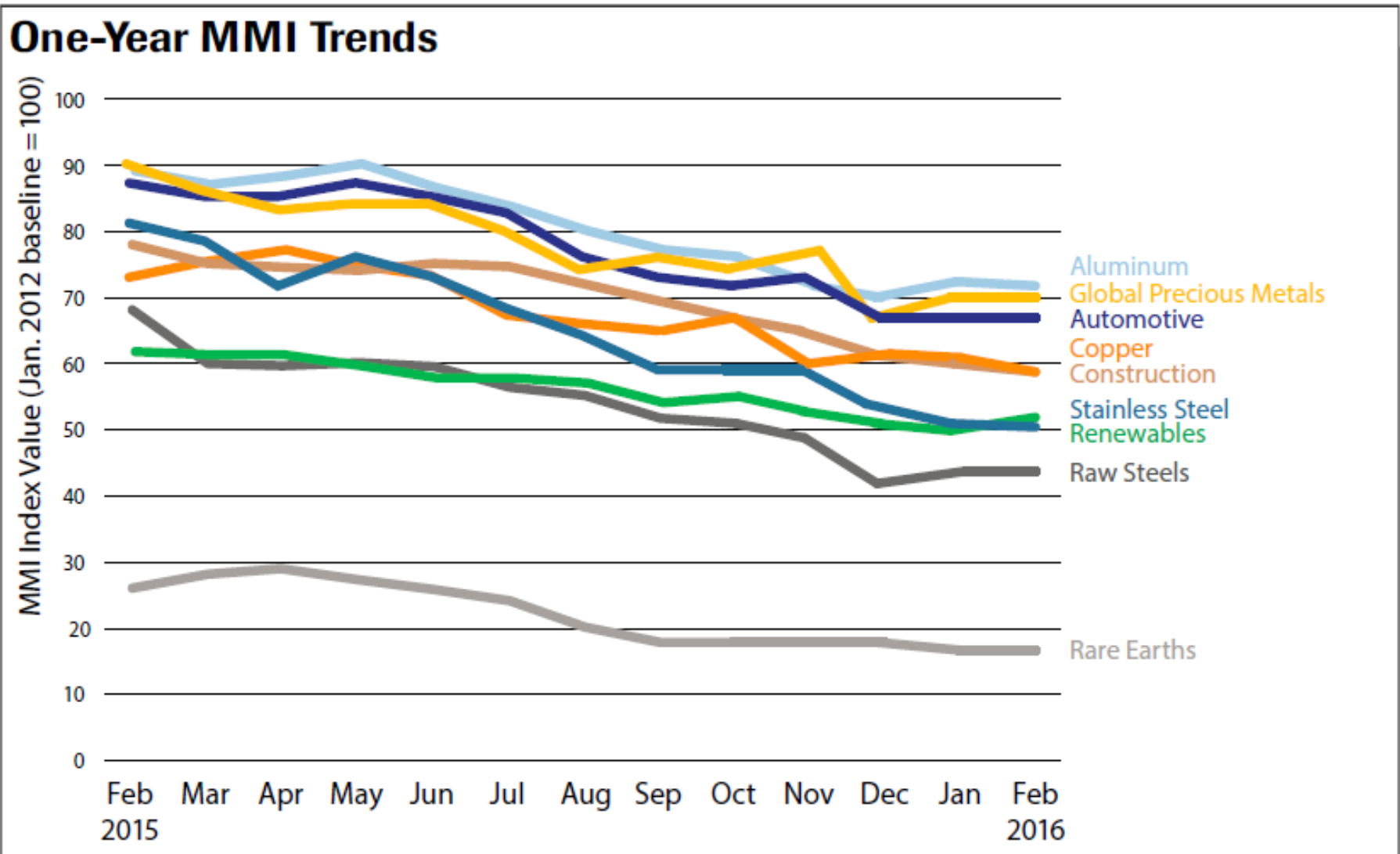
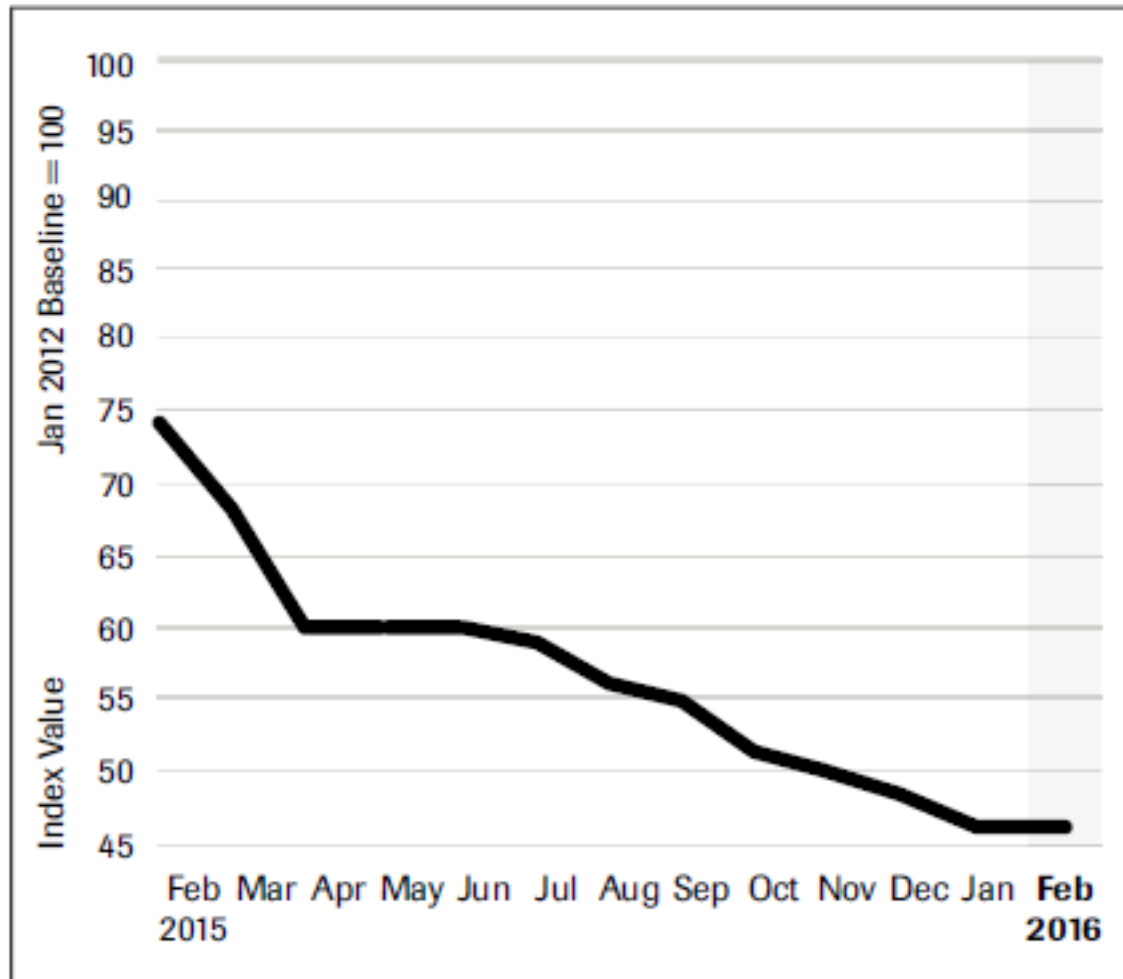

Metal Markets Review



Overall Metal Trends (Baseline 2012)



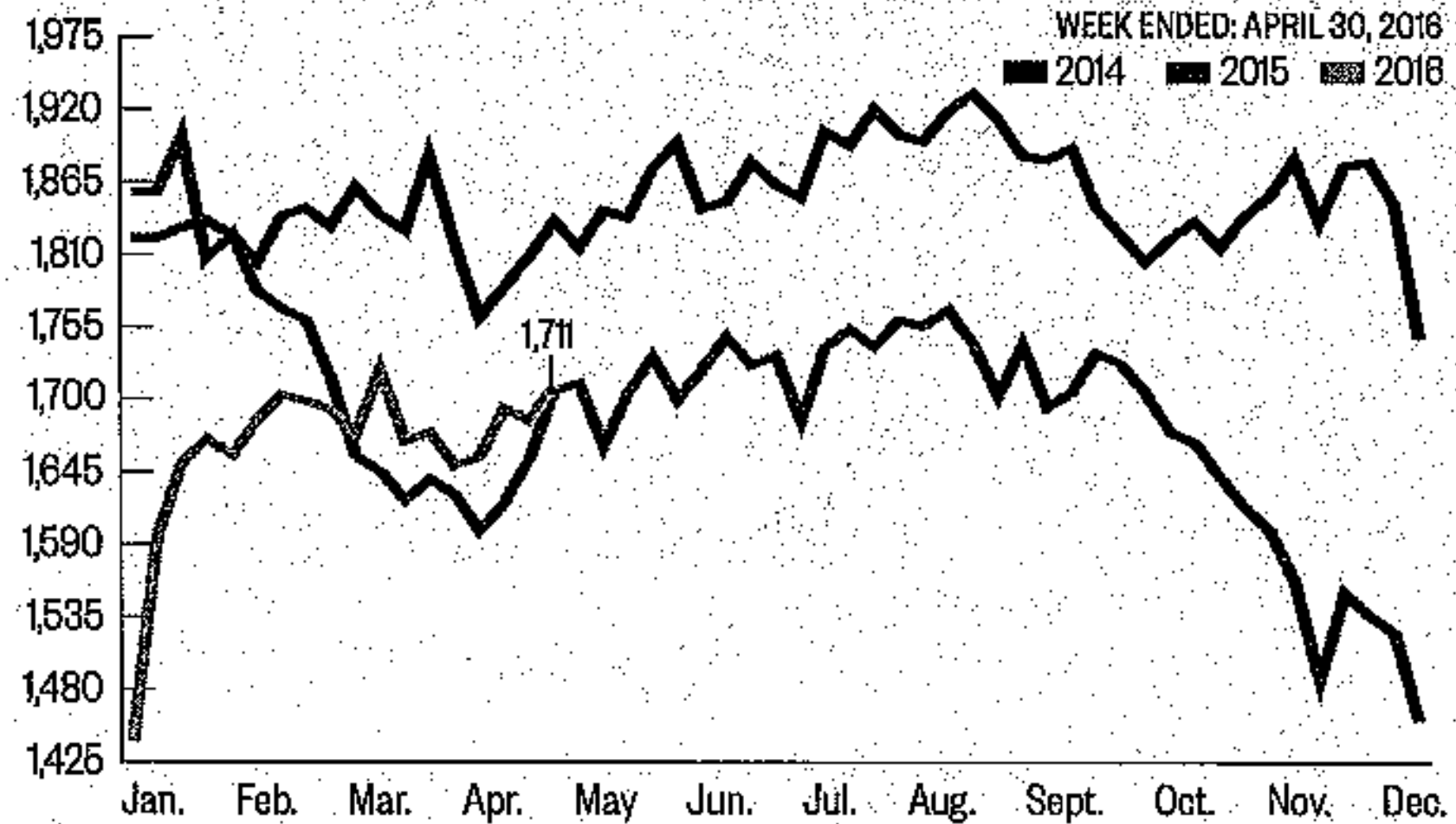


Raw Steels MMI[®]

January	2016
47	
February	
47	
Steady	
March	2016
TBD	

WEEKLY TONNAGE OF RAW STEEL PRODUCTION

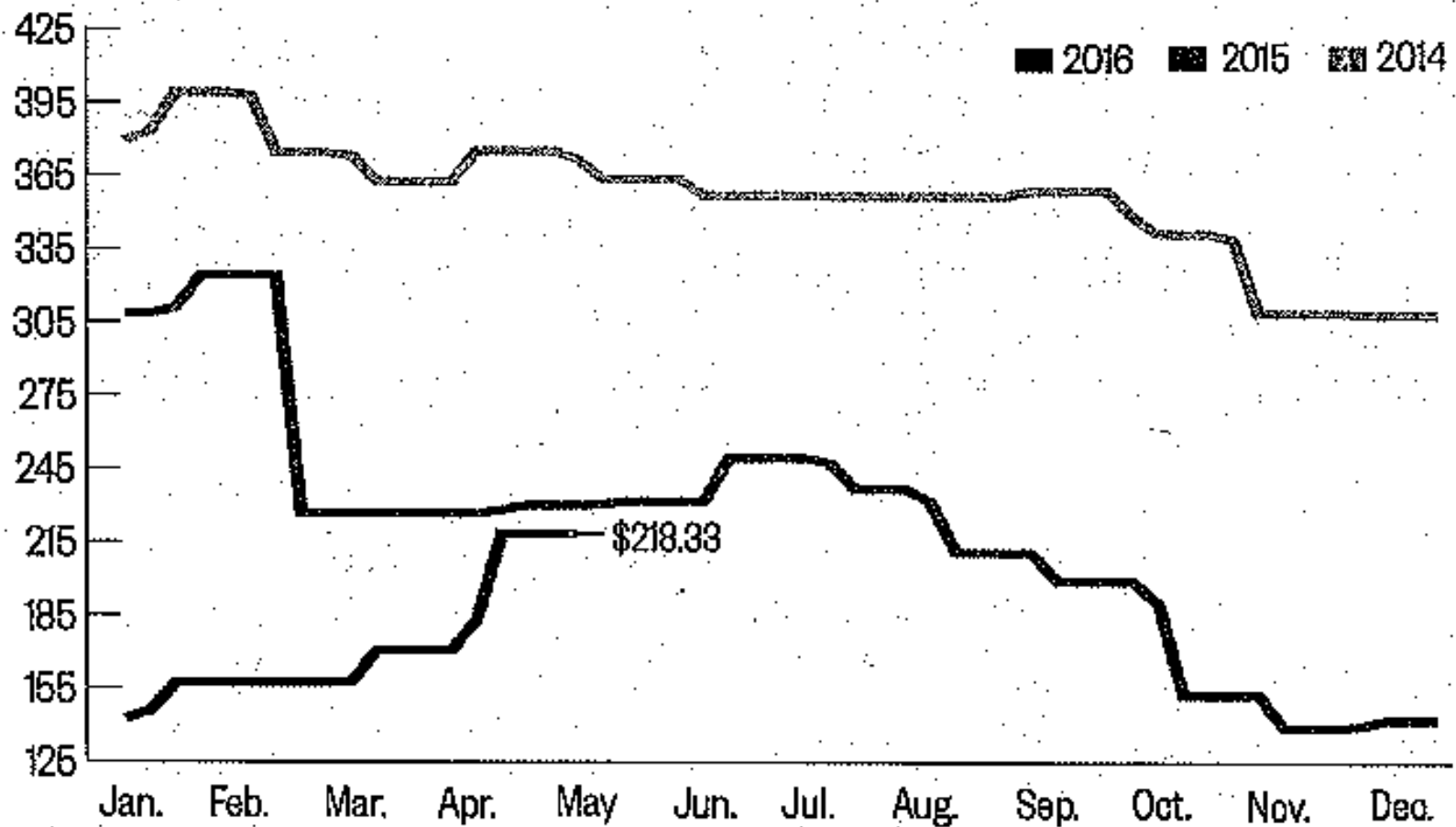
(thousands of net tons)



AMM WEEKLY NO. 1 HEAVY MELT PRICE COMPOSITE

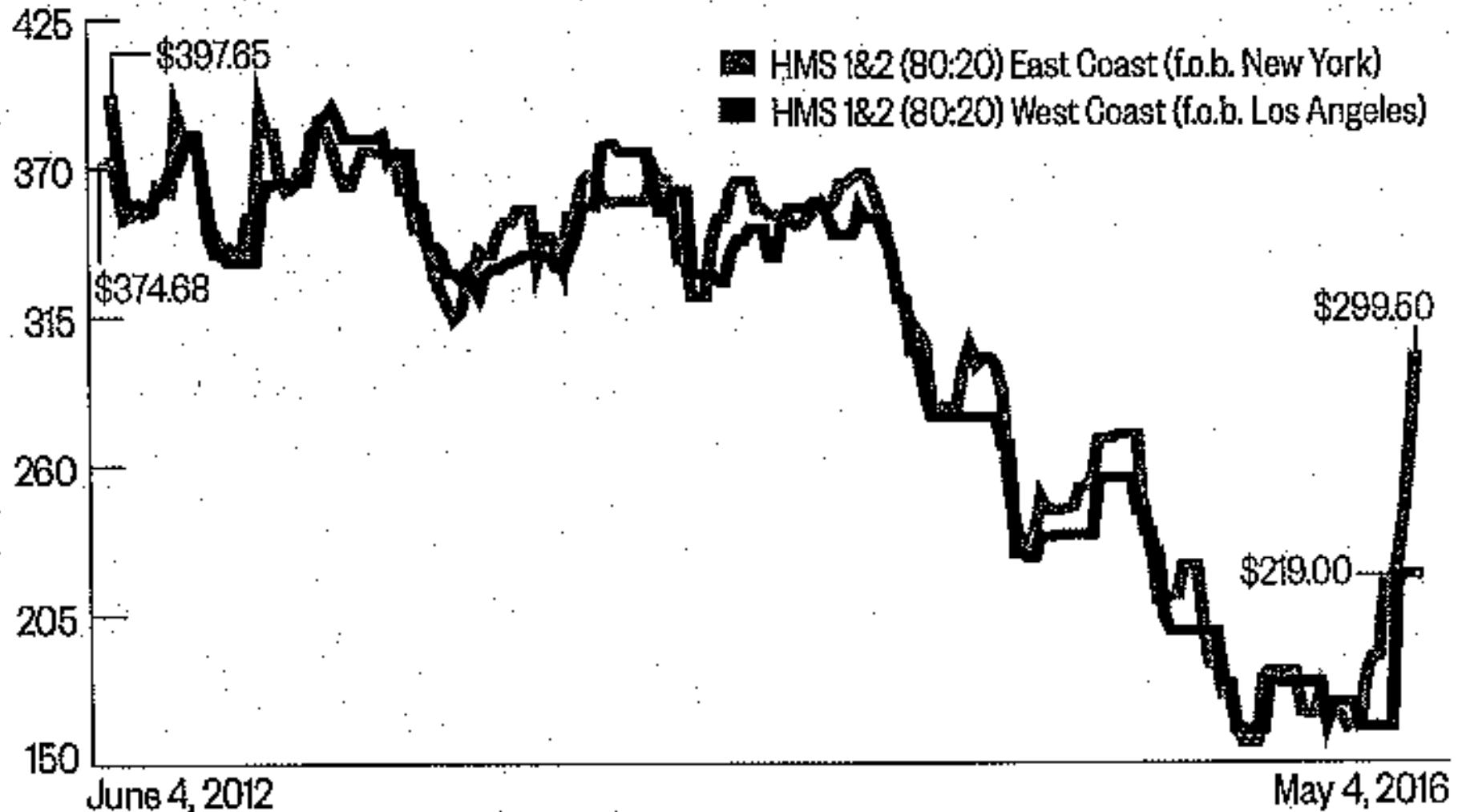
(price per gross ton)

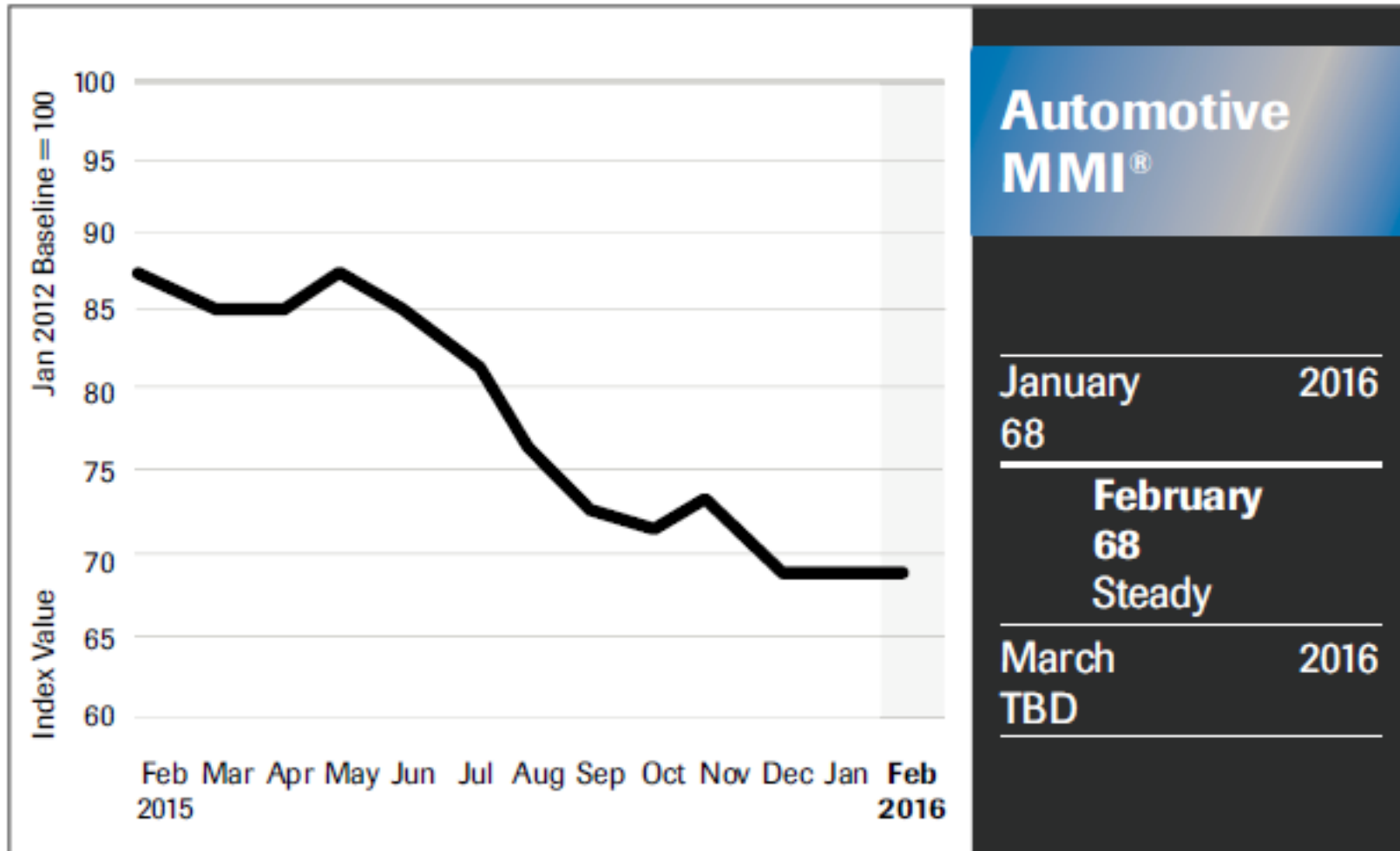
UPDATED: MAY 6, 2016

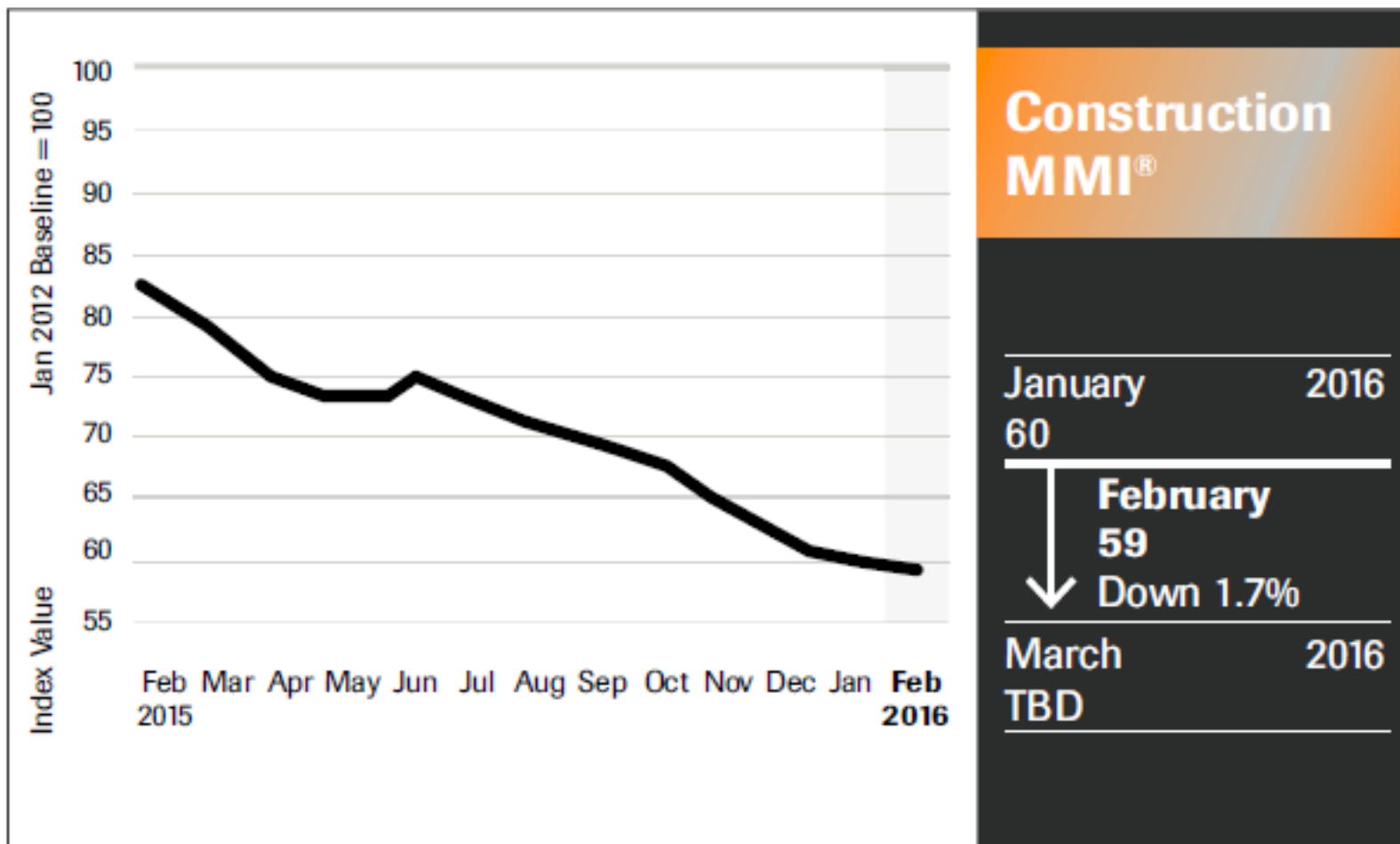


AMM FERROUS SCRAP EXPORT INDEX

(dollars per tonne)

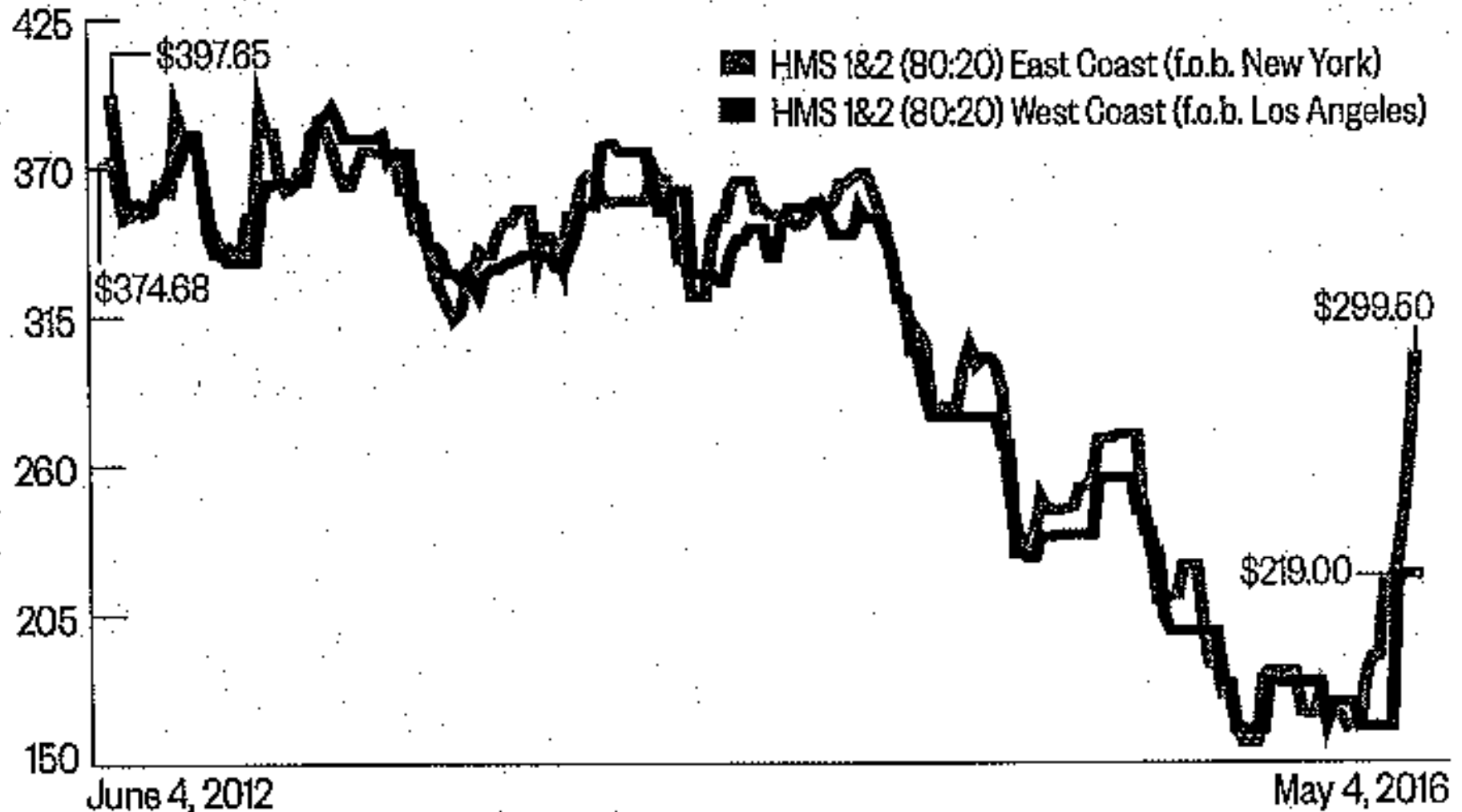




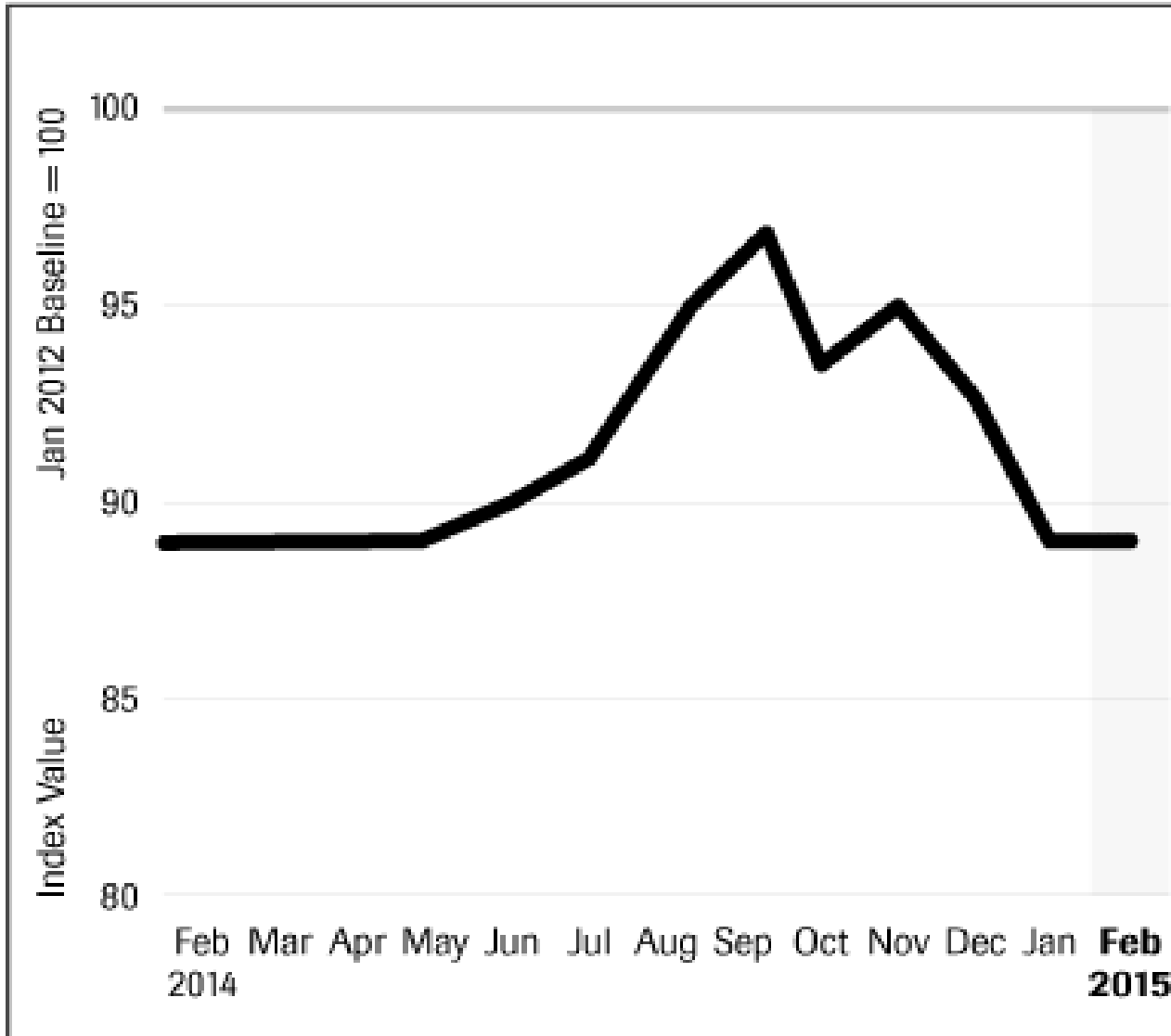


AMM FERROUS SCRAP EXPORT INDEX

(dollars per tonne)



Aluminum



Aluminum MMI®

January	2015
89	

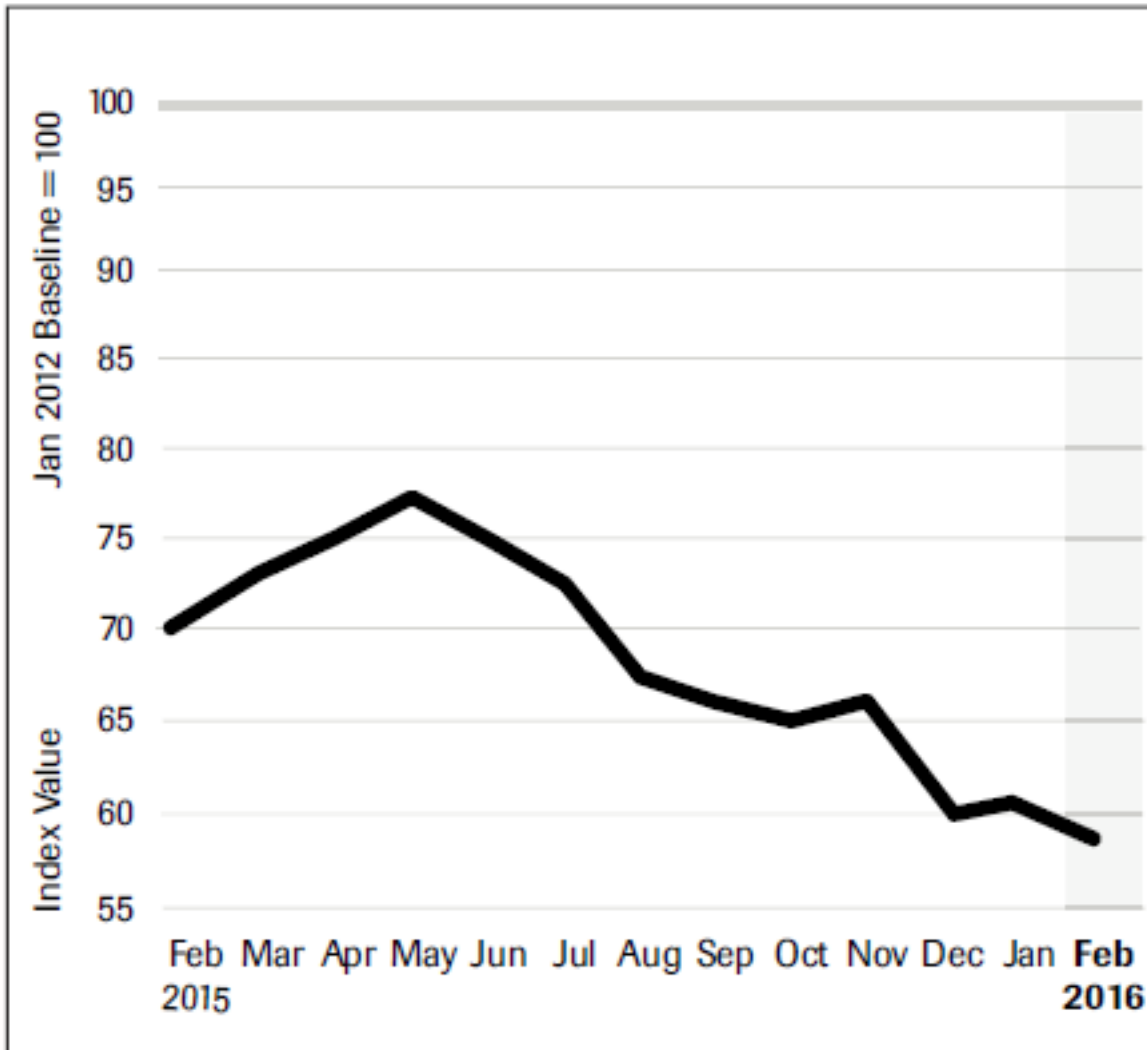
February
89
Steady

March	2015
TBD	

5 Year Aluminium Spot



Copper



Copper MMI[®]

January 2016
61

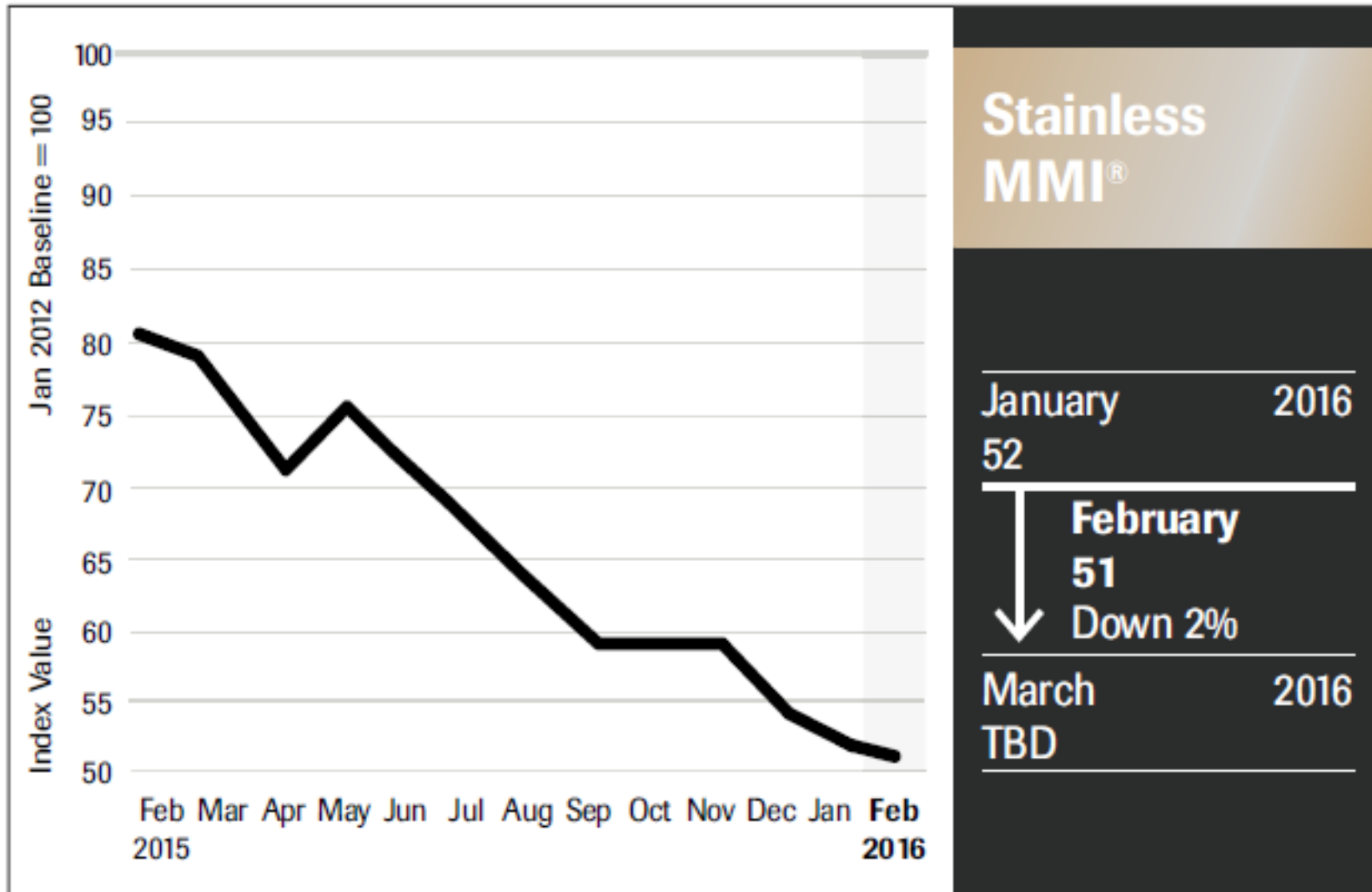
February 2016
58
Down 5%

March 2016
TBD

5 Year Copper Spot



Stainless Steel



5 Year Nickel Spot

